



High Street | Oakfield | Ryde | PO33 1EL

£625 Per month



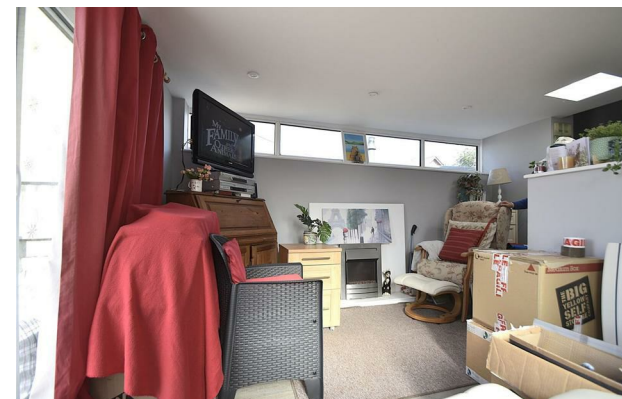
High Street | Oakfield
 Ryde | PO33 1EL
 £625 Per month

A charming, modernised one-bedroom semi-detached bungalow available in Ryde. This property features a bedroom, a modern open-plan kitchen, a shower room, and a private garden. Key benefits of this bungalow include its quiet location, UPVC double glazing, and modern electric heating throughout.

The kitchen has space for a washing machine, and patio doors lead from the living area to a large decking area and a garden laid to lawn with shrubs. Additionally, the property includes one off-road parking space.

The property is situated in a very quiet area of, Ryde, with easy access to the main bus route, nearby beaches, and local amenities.

- Charming modern bungalow
- Private garden with decking
- UPVC double glazing
- Off-road parking space
- Shower room with amenities
- Quiet Oakfield location
- Modern electric heating
- Near beaches and buses



Energy Efficiency Rating		Current	Potential
<i>Very energy efficient - lower running costs</i>			
(92 plus) A			
(81-91) B			
(69-80) C			
(55-68) D			
(39-54) E		54	
(21-38) F			
(1-20) G			
<i>Not energy efficient - higher running costs</i>			
England & Wales		EU Directive 2002/91/EC	

Council Tax Band A
 EPC Rating E

5 Hollyhock Crescent
 Newport
 Isle of Wight
 PO30 2FB
 01983 593000
 sophie@merriebanklettings.co.uk
 merriebankpropertyservices.co.uk